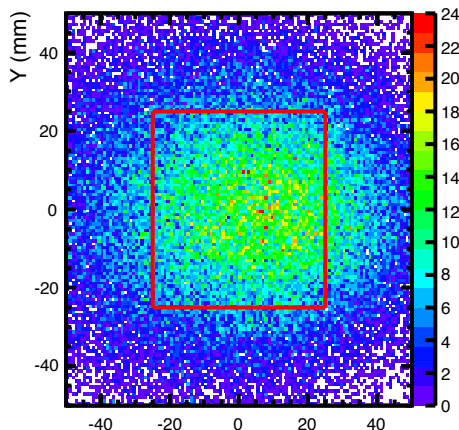
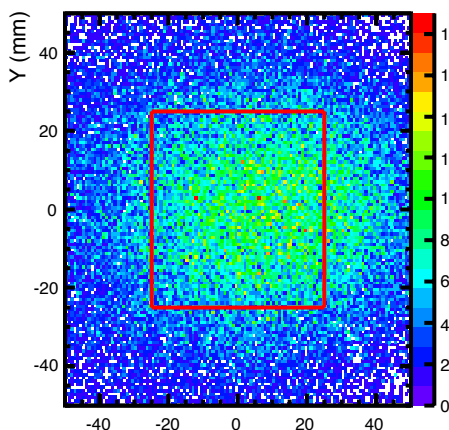


Muon hit on target, 1.0 mm plastic, init: 30 MeV/c



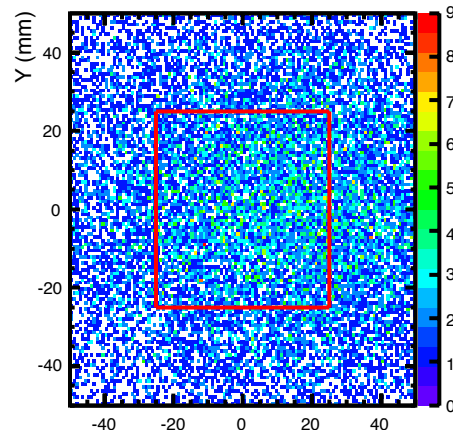
hit inside target: 42 %
total stop: 98.6%

Muon hit on target, 1.0 mm plastic, init: 29 MeV/c



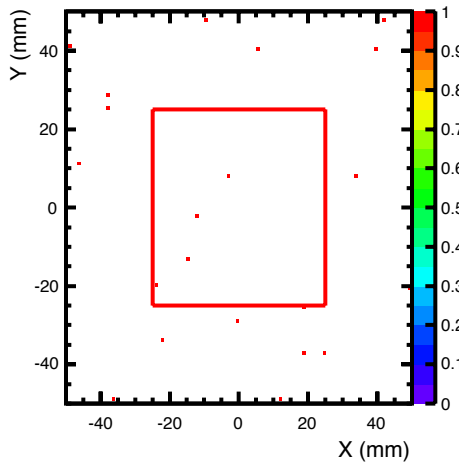
hit inside target: 31 %
total stop: 96%

Muon hit on target, 1.0 mm plastic, init: 28 MeV/c

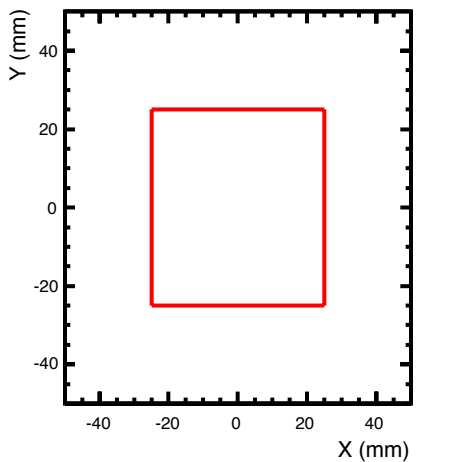


hit inside target: 8.3 %
total stop: 37 %

Muon hit on target, 1.0 mm plastic, init: 27 MeV/c



Muon hit on target, 1.0 mm plastic, init: 26 MeV/c



Muon hit on target, 1.0 mm plastic, init: 25 MeV/c

