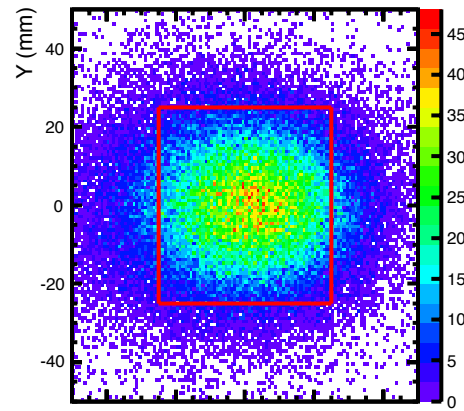
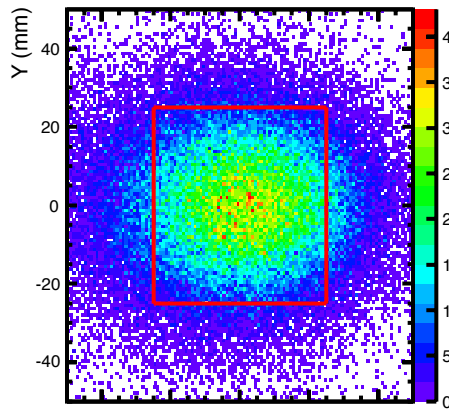


Muon hit on target, 0.5 mm plastic, init: 30 MeV/c



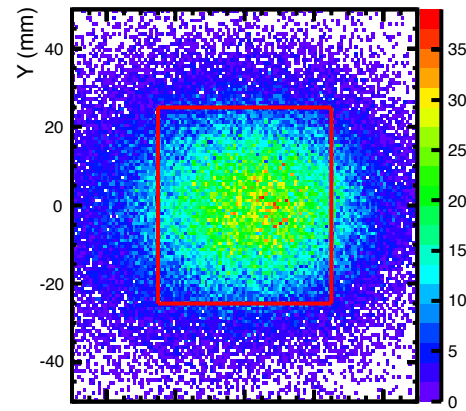
hit inside target: 74%
total stop: 2.8%

Muon hit on target, 0.5 mm plastic, init: 29 MeV/c



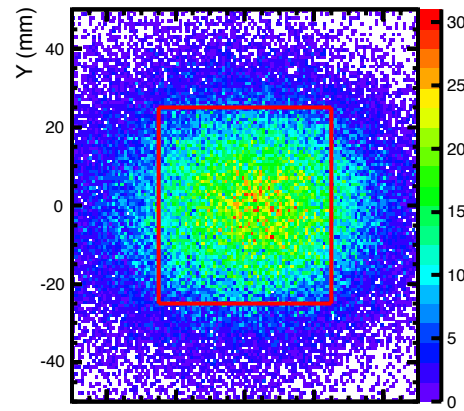
hit inside target: 69%
total stop: 21%

Muon hit on target, 0.5 mm plastic, init: 28 MeV/c



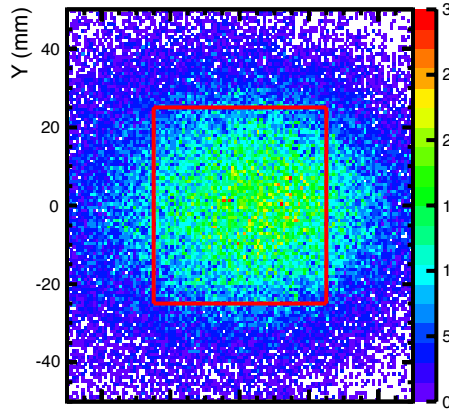
hit inside target: 63%
total stop: 78%

Muon hit on target, 0.5 mm plastic, init: 27 MeV/c



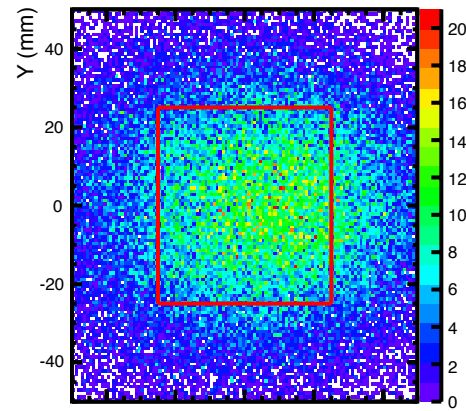
hit inside target: 56%
total stop: 99%

Muon hit on target, 0.5 mm plastic, init: 26 MeV/c



hit inside target: 47%
total stop: 99%

Muon hit on target, 0.5 mm plastic, init: 25 MeV/c



hit inside target: 36%
total stop: 98%